



Warrior Systems



1024 x 768 Product Specifications

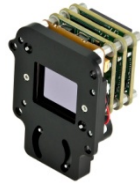
NanoCore® 1024 Features

- Small size, light weight, and low power
- 17µm pitch Focal Plane Array
- Two channels of digital video operating simultaneously
- Scene Colorization, 8 temperature set-points
- Logo, symbology and text string programming
- Battery indicator, crosshair, digital temp and temp bar display
- Two serial interfaces for communication & control; Serial TTL and USB
- Two discrete inputs, programmable
- Continuous Electronics Zoom, 1x – 8x
- 30Hz frame rate
- Auto-Close shutter when camera is off
- Field – Upgradeable Software
- Advanced Graphical User Interface (GUI) for camera control and setup

NanoCore® User Interfaces

- Common electronics interface for NanoCore 320, 640, and 1024 – for direct compatibility or upgrade in the NanoCore® series
- Common mechanical Interfaces for lens and mounting facilitates individual user integration
- Single 20 pin cable or board to board connection for testing and integration
- Simultaneous Camera Link™ and NTSC video output
- Additionally, custom optical, mechanical, and system electronics can be provided by L-3 to users' specifications
- Includes electronics for video formats and wide power range, and is available with choice of optics

NanoCore® 1024 x 768



(40° shown)

NanoCore® 1024C

NanoCore® 1024C

5001854-1

5001856-1

5001856-2

Infrared			
FPA Type	Uncooled a-Si Microbolometer		
FPA Resolution	1024 x 768		
FPA pixel pitch	17µm		
Spectral Band	LWIR		
Sensitivity	< 50 mK (with f/1.0 optic)		
Frame Rate	30Hz		
Optics	Additional optics can be adapted per user specifications		
Focal Length	None	25mm	12mm
FOV (Horiz x Vert.)	N/A	40° x 30°	73° x 55°
F/#	N/A	f/1.0	f/1.0
Lens Type	N/A	Atherm Manual focus	Atherm Manual focus
Waterproof (3 meters)	N/A	IP68	IP68
Performance			
Size (WxHxL)	1.6" x 2.2" x 1.23"	2.5" x 2.5" x 3.5"	2.5" x 2.5" x 3.6"
Weight	62 g	398g	347 g
Power	< 1.4Watts *typical		
Features			
Power input	2.1-3.6 Vdc and 8-16Vdc		
Digital Outputs	2 Channels Simultaneously		
Ch.1 Depth ; Format	8/16/24bit ; CameraLink		
Ch.2 Depth ; Format	8bit ; NTSC (supports 24 bit color)		
Turn on time	<5 sec		
Electronic Zoom	1-8x Continuous Zoom		
Image Processing	Histogram or AGC		
Polarity	Black Hot or White Hot		
Touch-up	Automatic (and Programmable) or Manual		
Serial Comm.	3.3V TTL or USB2.0 Full-Speed or High Speed (programmable)		
Discrete I/O	2 inputs (programmable)		
Environment			
Temperature, Operating	- 40° C to +60° C		
Temperature, Storage	-45° C to +105° C		
Mechanical Shock	20g (11ms) and 500g (0.4ms)		
Mechanical Vibration	4.3g (20Hz to 2000Hz)		
Humidity	5% - 95% RH (non-condense)		

*3Vdc and NTSC encoder turned OFF

Items described herein may require US Government authorization for export.